

GARDEN CITY, NY



500 OLD COUNTRY ROAD

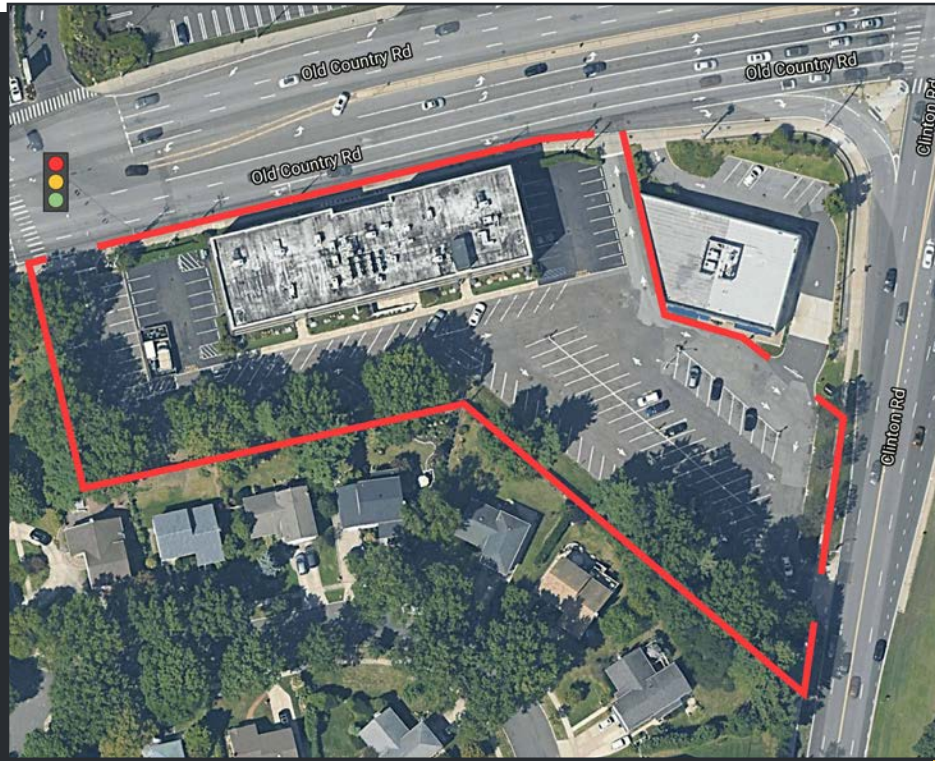
FOR MORE INFORMATION

Robert Delavale | VP, Leasing | 516.741.7400 x230 | rdelavale@breslinrealty.com
500 Old Country Rd, Garden City, NY :: www.breslinrealty.com

Breslin Realty
DEVELOPMENT CORP.

GARDEN CITY, NY

500 OLD COUNTRY ROAD



LOCATION

500 Old Country Rd, Garden City, NY

AVAILABLE

100% Lease - Call for Details

DESCRIPTION

- Full Service
- Owner-Occupied Building
- Immaculately Maintained
- Convenient Parking
- State of the Art HVAC
- Heated Sidewalks
- Easy access to Meadowbrook State Parkway
- Perfect Build-Out for a Law Office or similar use

COMMENTS

Located less than 1 mile from the Nassau County Courts, and across the street from the Roosevelt Field Mall

PRICE

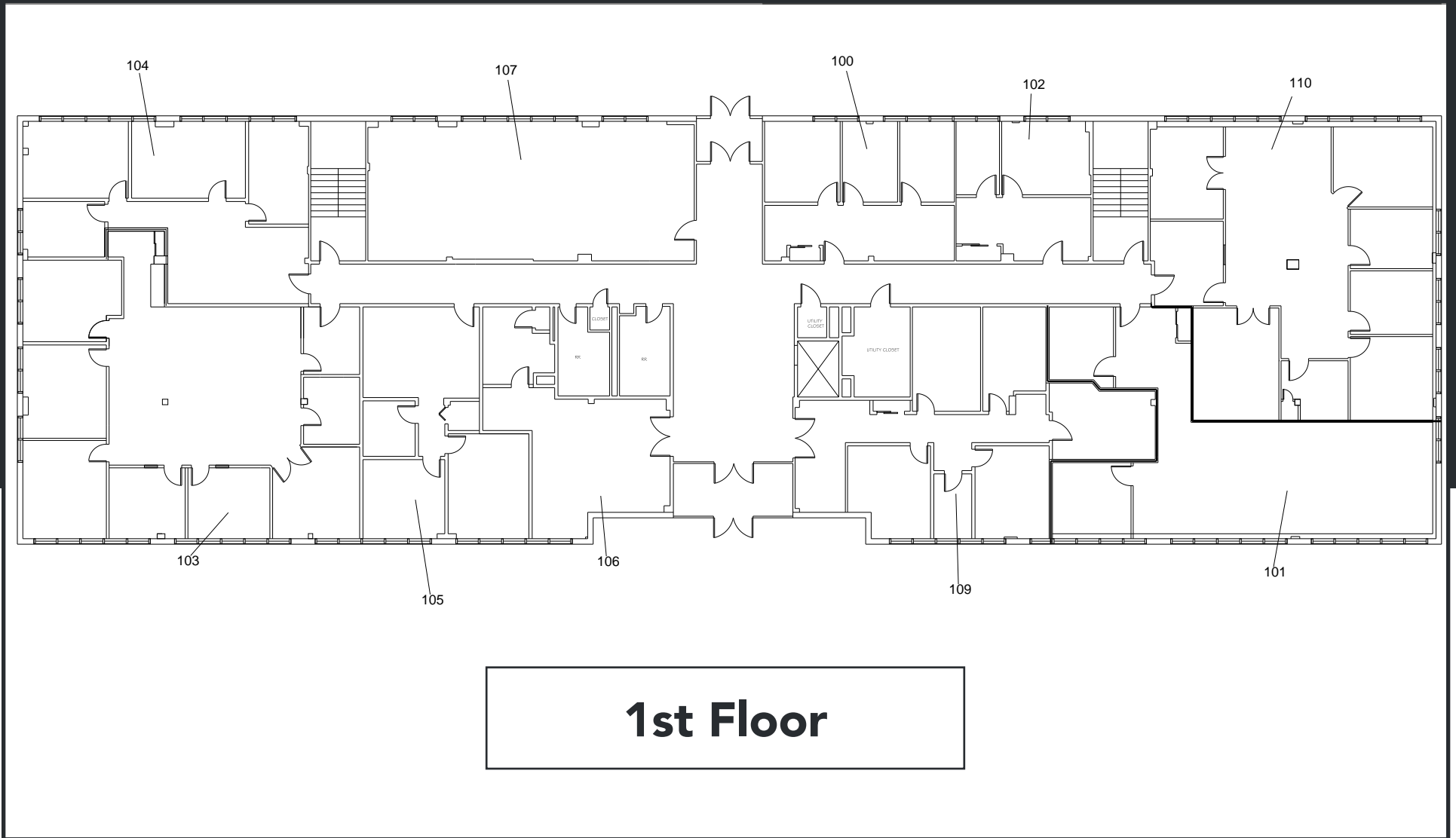
Upon Request

FOR MORE INFORMATION

Robert Delavale | VP, Leasing | 516.741.7400 x230 | rdelavale@breslinrealty.com
500 Old Country Rd, Garden City, NY :: www.breslinrealty.com

Breslin Realty
DEVELOPMENT CORP.

GARDEN CITY, NY



500 OLD COUNTRY ROAD

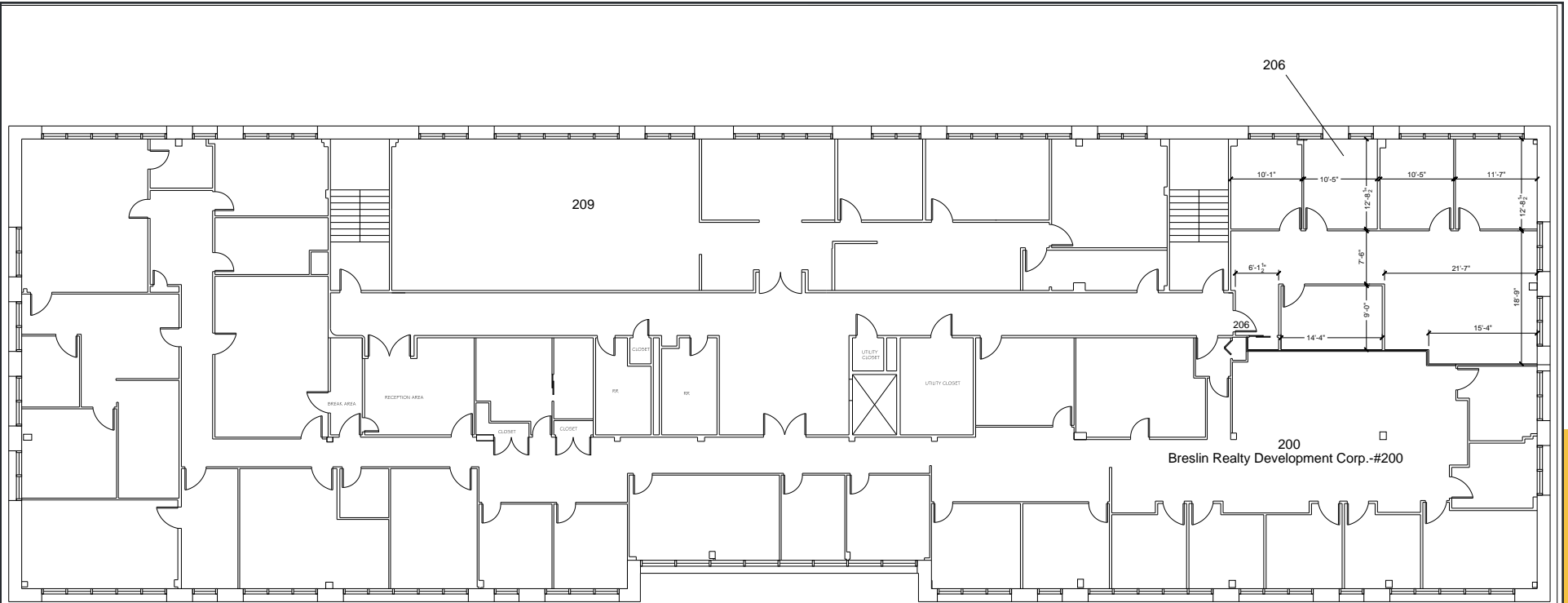
FOR MORE INFORMATION

Robert Delavale | VP, Leasing | 516.741.7400 x230 | rdelavale@breslinrealty.com
500 Old Country Rd, Garden City, NY :: www.breslinrealty.com

Breslin Realty
DEVELOPMENT CORP.

GARDEN CITY, NY

500 OLD COUNTRY ROAD



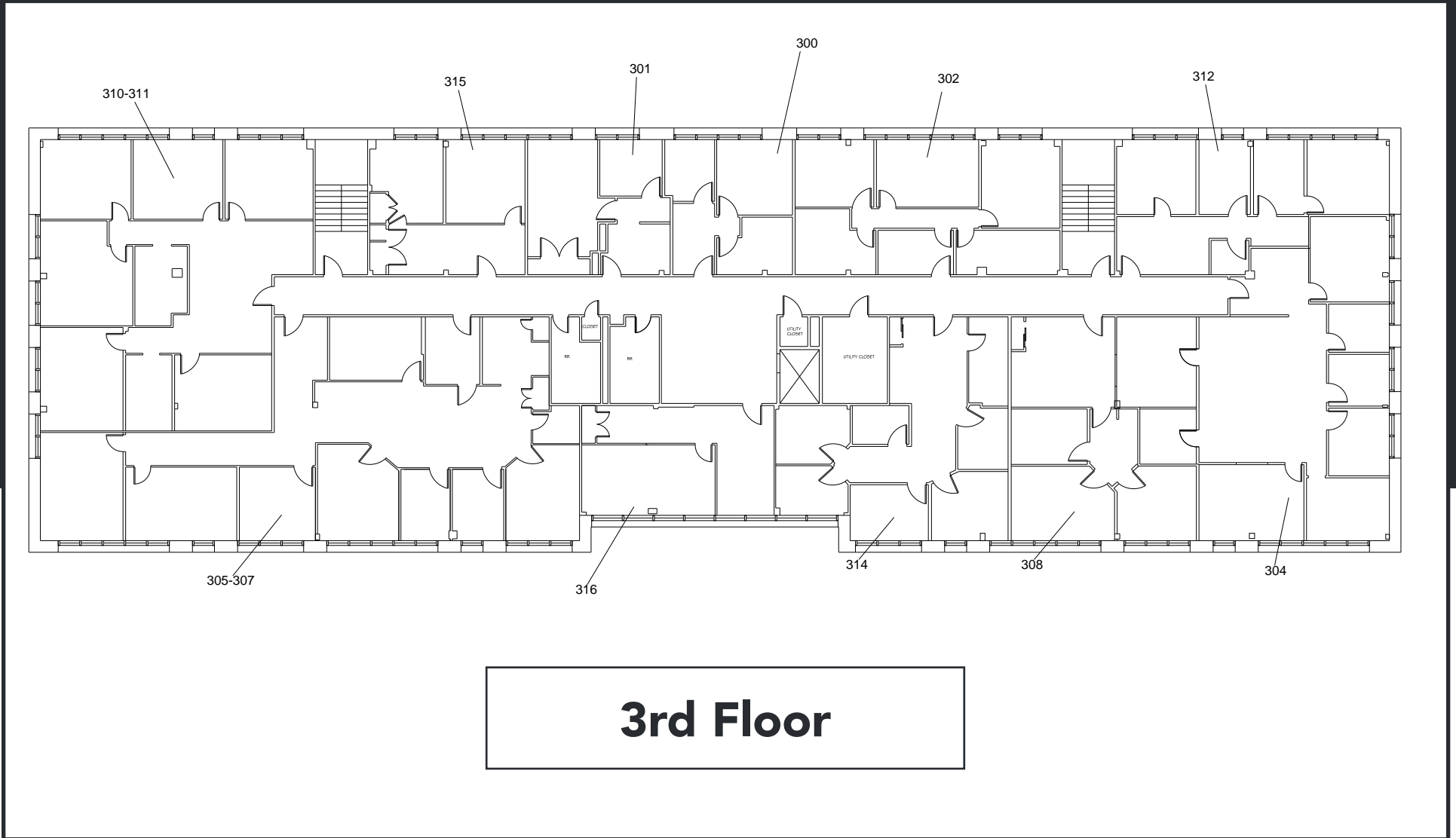
2nd Floor

FOR MORE INFORMATION

Robert Delavale | VP, Leasing | 516.741.7400 x230 | rdelavale@breslinrealty.com
500 Old Country Rd, Garden City, NY :: www.breslinrealty.com

Breslin Realty
DEVELOPMENT CORP.

GARDEN CITY, NY



3rd Floor

500 OLD COUNTRY ROAD

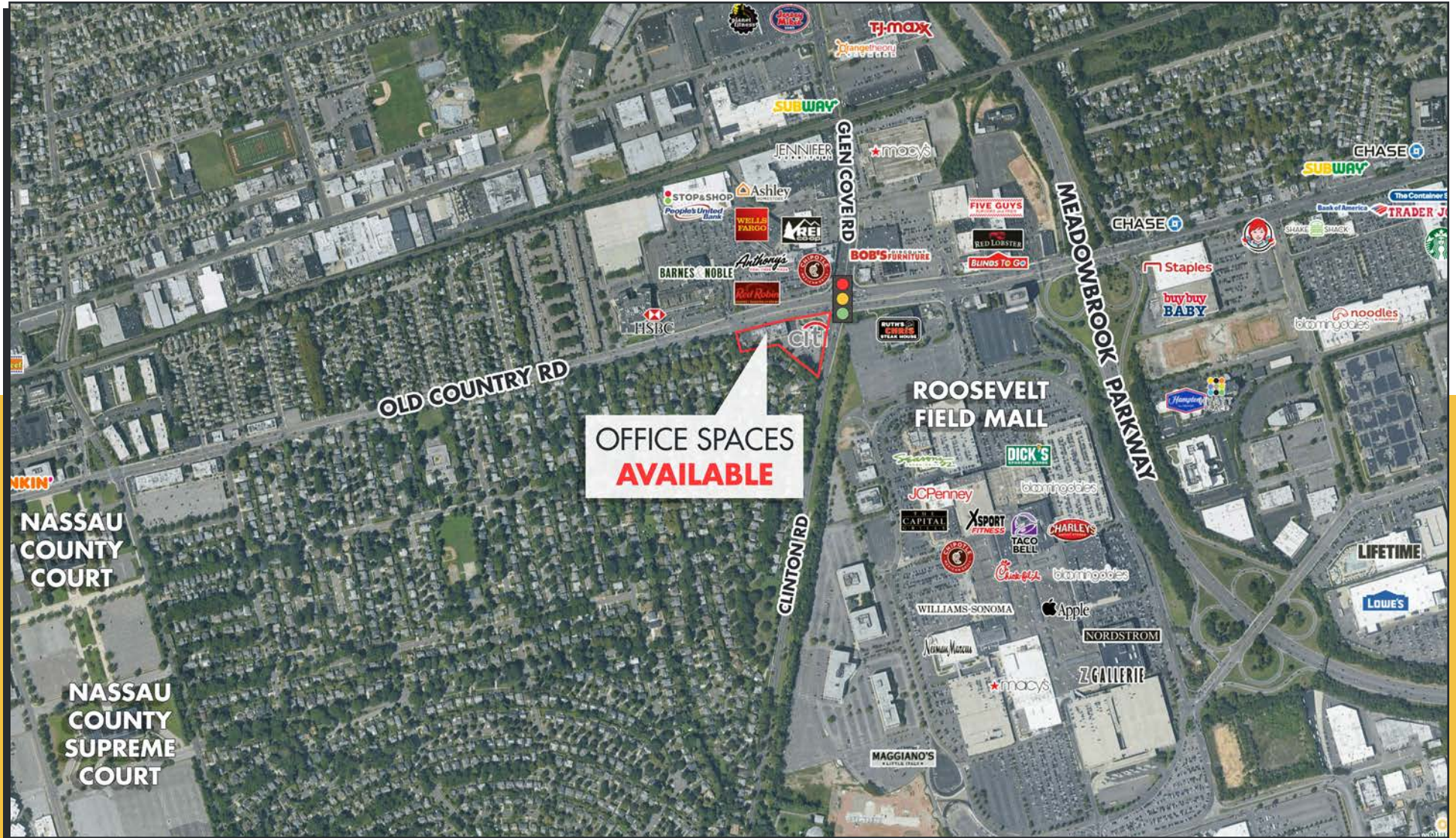
FOR MORE INFORMATION

Robert Delavale | VP, Leasing | 516.741.7400 x230 | rdelavale@breslinrealty.com
500 Old Country Rd, Garden City, NY :: www.breslinrealty.com

Breslin Realty
DEVELOPMENT CORP.

GARDEN CITY, NY

500 OLD COUNTRY ROAD



FOR MORE INFORMATION

Robert Delavale | VP, Leasing | 516.741.7400 x230 | rdelavale@breslinrealty.com
500 Old Country Rd, Garden City, NY :: www.breslinrealty.com

Breslin Realty
DEVELOPMENT CORP.

500 OLD COUNTRY ROAD, GARDEN CITY, NY

| 500 Old Country Rd Garden City, NY 11530 | 1 mi radius | 3 mi radius | 5 mi radius |
|--|------------------|-------------------|-------------------|
| Population | | | |
| Estimated Population (2021) | 15,350 | 177,057 | 497,050 |
| Projected Population (2026) | 15,327 | 176,776 | 495,989 |
| Census Population (2010) | 14,227 | 166,792 | 471,598 |
| Census Population (2000) | 14,690 | 161,949 | 460,555 |
| Projected Annual Growth (2021-2026) | -23 | -281 | -1,061 |
| Historical Annual Growth (2010-2021) | 1,123 0.7% | 10,265 0.6% | 25,452 0.5% |
| Historical Annual Growth (2000-2010) | -463 -0.3% | 4,843 0.3% | 11,043 0.2% |
| Estimated Population Density (2021) | 4,889 <i>psm</i> | 6,265 <i>psm</i> | 6,331 <i>psm</i> |
| Trade Area Size | 3.1 <i>sq mi</i> | 28.3 <i>sq mi</i> | 78.5 <i>sq mi</i> |
| Households | | | |
| Estimated Households (2021) | 5,717 | 54,704 | 152,066 |
| Projected Households (2026) | 5,848 | 55,956 | 155,347 |
| Census Households (2010) | 5,473 | 52,886 | 148,497 |
| Census Households (2000) | 5,532 | 51,346 | 147,222 |
| Projected Annual Growth (2021-2026) | 131 0.5% | 1,253 0.5% | 3,282 0.4% |
| Historical Annual Change (2000-2021) | 185 0.2% | 3,358 0.3% | 4,844 0.2% |
| Average Household Income | | | |
| Estimated Average Household Income (2021) | \$141,485 | \$156,207 | \$161,807 |
| Projected Average Household Income (2026) | \$172,728 | \$193,640 | \$200,180 |
| Census Average Household Income (2010) | \$109,366 | \$106,267 | \$112,417 |
| Census Average Household Income (2000) | \$89,446 | \$90,255 | \$91,304 |
| Projected Annual Change (2021-2026) | \$31,243 4.4% | \$37,433 4.8% | \$38,373 4.7% |
| Historical Annual Change (2000-2021) | \$52,039 2.8% | \$65,952 3.5% | \$70,503 3.7% |
| Median Household Income | | | |
| Estimated Median Household Income (2021) | \$107,298 | \$112,833 | \$121,920 |
| Projected Median Household Income (2026) | \$125,268 | \$129,787 | \$140,336 |
| Census Median Household Income (2010) | \$92,276 | \$83,857 | \$90,892 |
| Census Median Household Income (2000) | \$73,563 | \$71,940 | \$74,469 |
| Projected Annual Change (2021-2026) | \$17,970 3.3% | \$16,954 3.0% | \$18,416 3.0% |
| Historical Annual Change (2000-2021) | \$33,735 2.2% | \$40,893 2.7% | \$47,451 3.0% |
| Per Capita Income | | | |
| Estimated Per Capita Income (2021) | \$52,713 | \$48,449 | \$49,682 |
| Projected Per Capita Income (2026) | \$65,923 | \$61,482 | \$62,877 |
| Census Per Capita Income (2010) | \$42,069 | \$33,695 | \$35,398 |
| Census Per Capita Income (2000) | \$33,504 | \$28,497 | \$29,097 |
| Projected Annual Change (2021-2026) | \$13,210 5.0% | \$13,033 5.4% | \$13,196 5.3% |
| Historical Annual Change (2000-2021) | \$19,209 2.7% | \$19,951 3.3% | \$20,584 3.4% |
| Estimated Average Household Net Worth (2021) | \$1.57 M | \$1.65 M | \$1.8 M |

| 500 Old Country Rd Garden City, NY 11530 | 1 mi radius | 3 mi radius | 5 mi radius |
|--|---------------|---------------|---------------|
| Total Annual Consumer Expenditure (2021) | | | |
| Total Household Expenditure | \$521.93 M | \$5.36 B | \$15.31 B |
| Total Non-Retail Expenditure | \$277.12 M | \$2.85 B | \$8.14 B |
| Total Retail Expenditure | \$244.81 M | \$2.5 B | \$7.17 B |
| Apparel | \$18.86 M | \$194.69 M | \$557.11 M |
| Contributions | \$18.43 M | \$191.4 M | \$551.05 M |
| Education | \$18.08 M | \$190.64 M | \$549.04 M |
| Entertainment | \$30.47 M | \$312.5 M | \$897.84 M |
| Food and Beverages | \$75.46 M | \$773.12 M | \$2.2 B |
| Furnishings and Equipment | \$18.82 M | \$192.58 M | \$553.17 M |
| Gifts | \$14.06 M | \$147.83 M | \$424.79 M |
| Health Care | \$42.57 M | \$432.1 M | \$1.23 B |
| Household Operations | \$21.1 M | \$217.2 M | \$622.72 M |
| Miscellaneous Expenses | \$9.99 M | \$102.23 M | \$292.56 M |
| Personal Care | \$7.01 M | \$71.69 M | \$204.98 M |
| Personal Insurance | \$4 M | \$41.12 M | \$119.01 M |
| Reading | \$1.16 M | \$11.84 M | \$33.89 M |
| Shelter | \$109.13 M | \$1.12 B | \$3.2 B |
| Tobacco | \$2.65 M | \$26.9 M | \$74.88 M |
| Transportation | \$94.05 M | \$958.47 M | \$2.75 B |
| Utilities | \$36.09 M | \$368.49 M | \$1.05 B |
| Monthly Household Consumer Expenditure (2021) | | | |
| Total Household Expenditure | \$7,608 | \$8,158 | \$8,389 |
| Total Non-Retail Expenditure | \$4,039 53.1% | \$4,342 53.2% | \$4,461 53.2% |
| Total Retail Expenditures | \$3,568 46.9% | \$3,816 46.8% | \$3,928 46.8% |
| Apparel | \$275 3.6% | \$297 3.6% | \$305 3.6% |
| Contributions | \$269 3.5% | \$292 3.6% | \$302 3.6% |
| Education | \$264 3.5% | \$290 3.6% | \$301 3.6% |
| Entertainment | \$444 5.8% | \$476 5.8% | \$492 5.9% |
| Food and Beverages | \$1,100 14.5% | \$1,178 14.4% | \$1,208 14.4% |
| Furnishings and Equipment | \$274 3.6% | \$293 3.6% | \$303 3.6% |
| Gifts | \$205 2.7% | \$225 2.8% | \$233 2.8% |
| Health Care | \$621 8.2% | \$658 8.1% | \$676 8.1% |
| Household Operations | \$308 4.0% | \$331 4.1% | \$341 4.1% |
| Miscellaneous Expenses | \$146 1.9% | \$156 1.9% | \$160 1.9% |
| Personal Care | \$102 1.3% | \$109 1.3% | \$112 1.3% |
| Personal Insurance | \$58 0.8% | \$63 0.8% | \$65 0.8% |
| Reading | \$17 0.2% | \$18 0.2% | \$19 0.2% |
| Shelter | \$1,591 20.9% | \$1,710 21.0% | \$1,751 20.9% |
| Tobacco | \$39 0.5% | \$41 0.5% | \$41 0.5% |
| Transportation | \$1,371 18.0% | \$1,460 17.9% | \$1,505 17.9% |
| Utilities | \$526 6.9% | \$561 6.9% | \$573 6.8% |

©2021, Sites USA, Chandler, Arizona, 480-491-1112 Demographic Source: Applied Geographic Solutions 5/2021, TIGER Geography - RFULL9

DEMOGRAPHICS

FOR MORE INFORMATION

Robert Delavale | VP, Leasing | 516.741.7400 x230 | rdelavale@breslinrealty.com
 500 Old Country Rd, Garden City, NY :: www.breslinrealty.com

Breslin Realty
 DEVELOPMENT CORP.

GARDEN CITY, NY

500 OLD COUNTRY ROAD



FOR MORE INFORMATION

Robert Delavale | VP, Leasing | 516.741.7400 x230 | rdelavale@breslinrealty.com
500 Old Country Rd, Garden City, NY :: www.breslinrealty.com

Breslin Realty
DEVELOPMENT CORP.

GARDEN CITY, NY



500 OLD COUNTRY ROAD

FOR MORE INFORMATION

Robert Delavale | VP, Leasing | 516.741.7400 x230 | rdelavale@breslinrealty.com
500 Old Country Rd, Garden City, NY :: www.breslinrealty.com

Breslin Realty
DEVELOPMENT CORP.

GARDEN CITY, NY

GARDEN CITY SURROUNDING AREA

ROOSEVELT FIELD MALL



NASSAU COUNTY COURTS

RETAIL SHOPS ON FRANKLIN AVE



FOR MORE INFORMATION

Robert Delavale | VP, Leasing | 516.741.7400 x230 | rdelavale@breslinrealty.com
500 Old Country Rd, Garden City, NY :: www.breslinrealty.com

Breslin Realty
DEVELOPMENT CORP.